

Date: 25/03/2022 Filename: IA301100_EIS_RFI_F003_TEC_v2

Legend

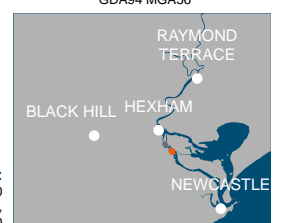
- EIS area
- Construction activities
- The proposal
- Cadastre
- National Park
- Road

Threatened ecological communities

- Freshwater Wetlands on Coastal Floodplains of the New South Wales North Coast, Sydney Basin and South East Corner Bioregions (Endangered) (BC Act)
- Coastal saltmarsh in the NSW North Coast, Sydney Basin and South East Corner bioregions (Endangered) (BC Act)
- FM act - Plant community type (vegetation zone and condition)
- PCT 1746 Saltmarsh Estuarine Complex(VZ 3 – Modified)
- PCT 1747 Grey Mangrove low closed forest(VZ 1 – Good)

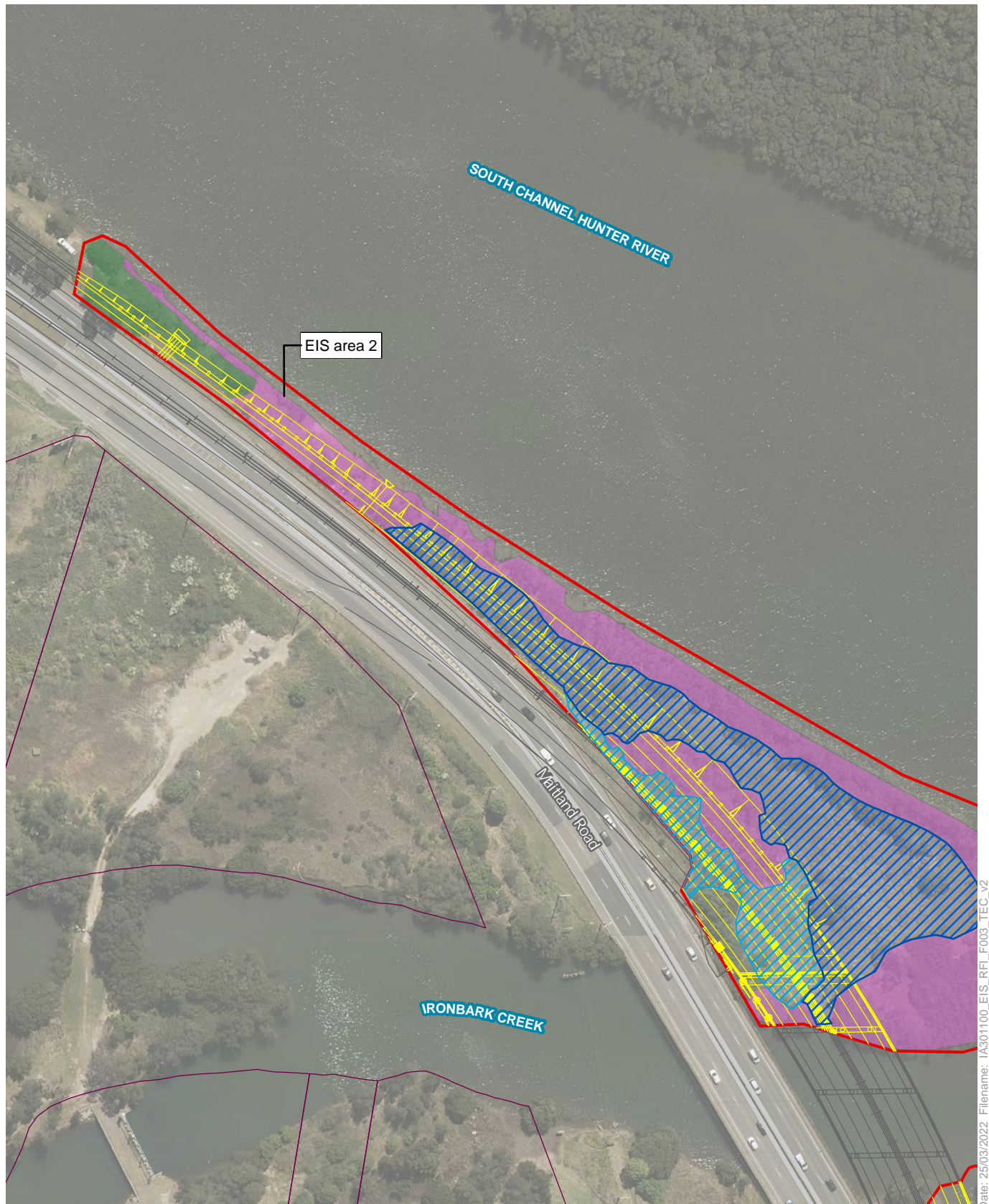


Scale 1:1,600 at A4
GDA94 MGA56



Data sources:
Jacobs 2020
Department Finance,
Services and Innovation 2020

Appendix 2 Figure A.1 Vegetation in the EIS area to be offset under the BC Act and FM Act
Hexham Straight Widening



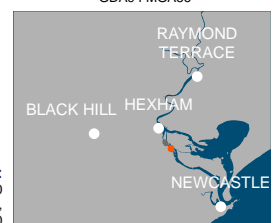
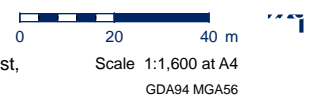
Date: 25/03/2022 Filename: IA301100_EIS_RFI_F003_TEC_v2

Legend

- EIS area
- Construction activities
- The proposal
- Cadastre
- National Park
- Road

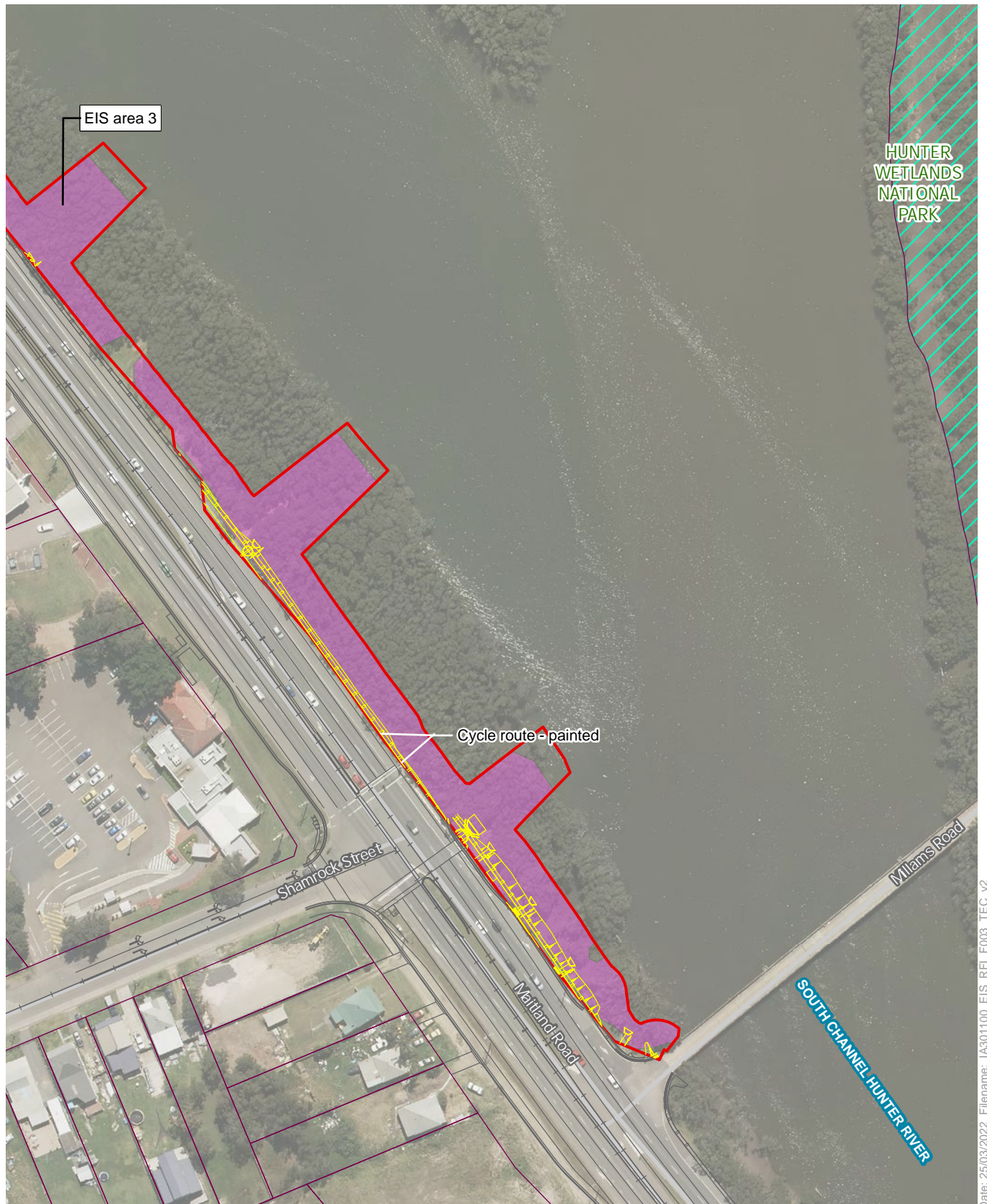
Threatened ecological communities

- Freshwater Wetlands on Coastal Floodplains of the New South Wales North Coast, Sydney Basin and South East Corner Bioregions (Endangered) (BC Act)
- Coastal saltmarsh in the NSW North Coast, Sydney Basin and South East Corner bioregions (Endangered) (BC Act)
- FM act - Plant community type (vegetation zone and condition)
- PCT 1746 Saltmarsh Estuarine Complex(VZ 3 – Modified)
- PCT 1747 Grey Mangrove low closed forest(VZ 1 – Good)



Data sources:
 Jacobs 2020
 Department Finance,
 Services and Innovation 2020

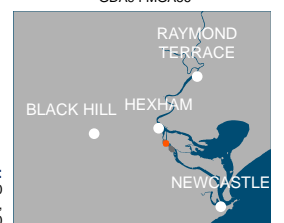
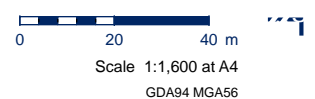
Appendix 2 Figure A.2 Vegetation in the EIS area to be offset under the BC Act and FM Act
 Hexham Straight Widening



Date: 25/03/2022 Filename: IA301100_EIS_RFI_F003_TEC_v2

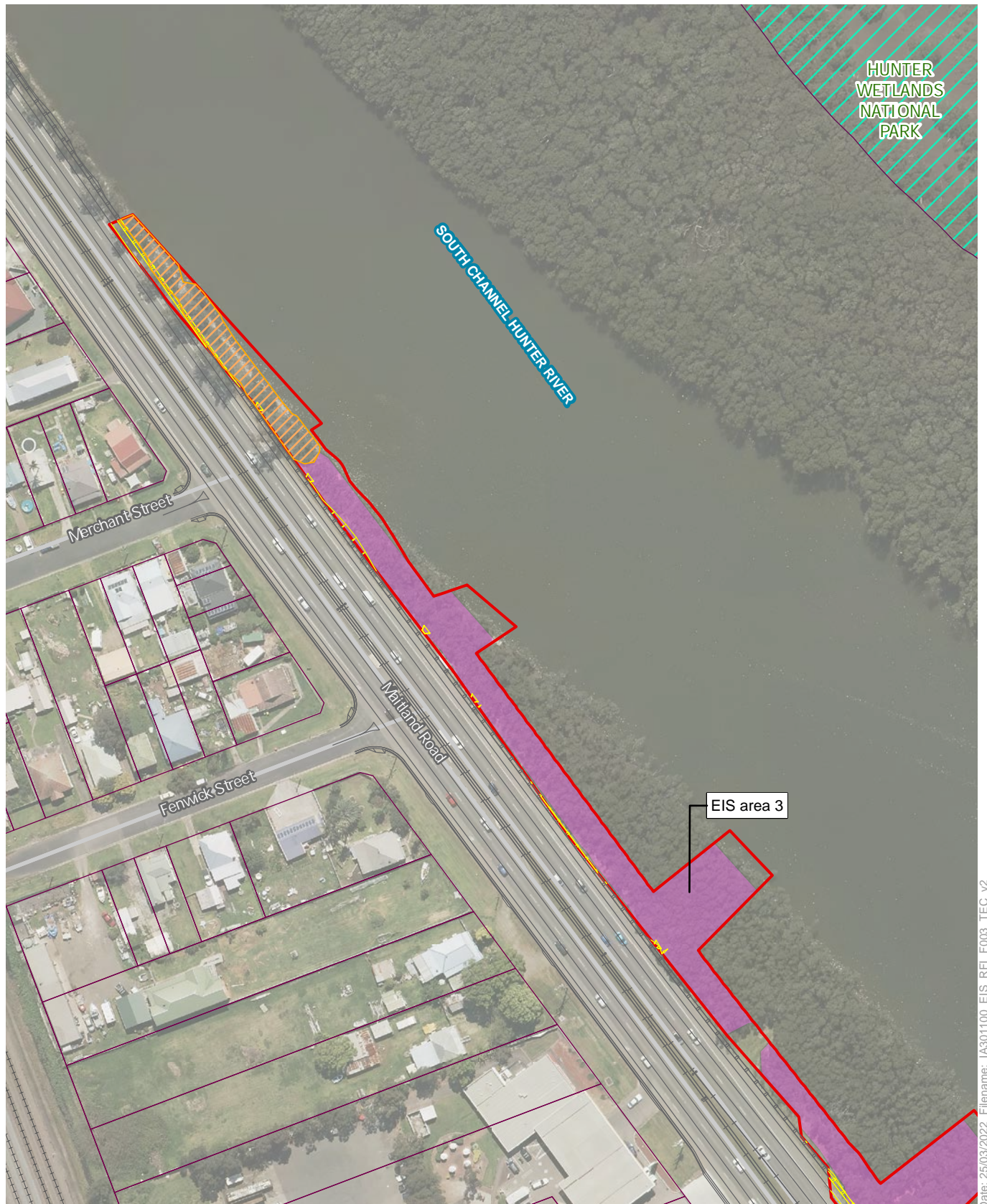
Legend

- EIS area
- Construction activities
- The proposal
- Cadastre
- National Park
- Road
- FM act - Plant community type (vegetation zone and condition)
PCT 1747 Grey Mangrove low closed forest(VZ 1 – Good)



Data sources:
Jacobs 2020
Department Finance,
Services and Innovation 2020

Appendix 2 Figure A.3 Vegetation in the EIS area to be offset under the BC Act and FM Act
Hexham Straight Widening



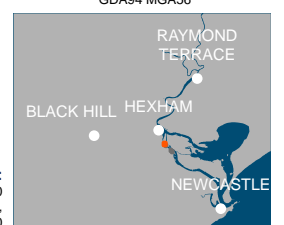
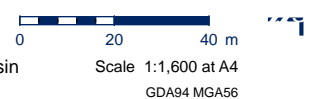
Date: 25/03/2022 Filename: IA301100_EIS_RFI_F003_TEC_v2

Legend

- EIS area
- Construction activities
- The proposal
- Cadastre
- National Park
- Road
- Railway

Threatened ecological communities

- Swamp Oak Floodplain Forest of the New South Wales North Coast, Sydney Basin and South East Corner Bioregions - (Endangered) (BC Act and EPBC Act)
- FM act - Plant community type (vegetation zone and condition)
- PCT 1747 Grey Mangrove low closed forest (VZ 1 – Good)



Data sources:
 Jacobs 2020
 Department Finance,
 Services and Innovation 2020

Appendix 2 Figure A.4 Vegetation in the EIS area to be offset under the BC Act and FM Act
 Hexham Straight Widening